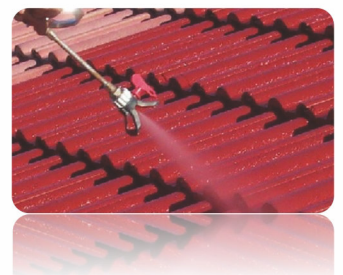
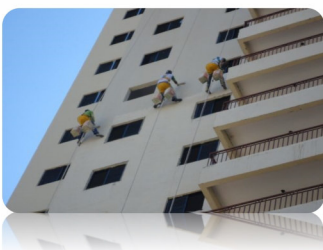
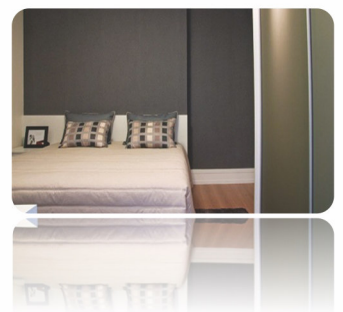


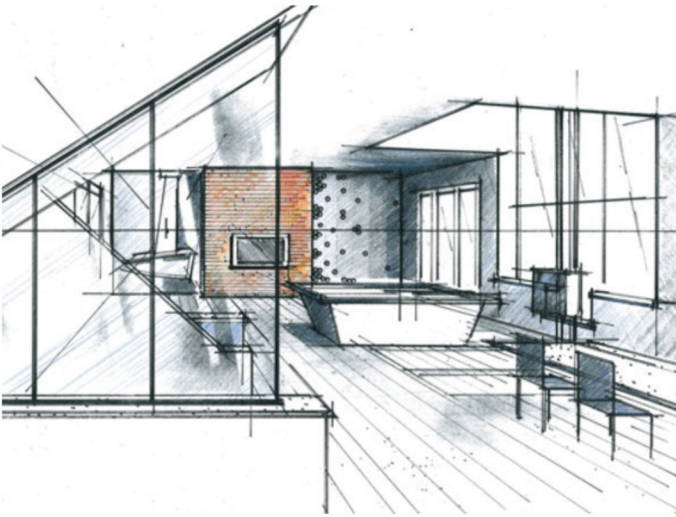
# Decorative Coatings - Interior & Exterior



PERFORMANCE IN COATINGS



# TIPS TO PAINT YOUR HOME



## I need to paint my house

When the visual appearance of your home begins to give signs of aging, usually it's time to paint. A simple change of colour of a wall alone can give to your home the desired renovation looking without much secret. This task involves not only the choice of colour, but another factors need to enter on your considerations requirement.

## What paint to use in the interior

There are many types of paints in the market, with smell, odourless, antibacterial, anti-mold, etc. A paint for the exterior can even do well in the indoor area, but the opposite might not be true. Also the paint gloss for interior can be chosen from "matte" to "glossy". So how to choose the ideal coating? In addition to personal choice, it is good to know what is more suitable for each job.

### Some tips to the different kind of finishes

- A lower level gloss disguise better the surface imperfections.
- Also the ability to make more diffuse and pleasant lighting is related to a lower gloss, ie, flat surfaces help in diffused lighting.
- An higher gloss level usually allows an easier cleaning; so glossy coatings are more suitable to bathrooms and kitchens.
- A good waterproofing and vapour transmission ensure a better inside environment to the house, especially during the winter.
- Wear resistance increases with the brightness. Glossy coatings have a better wearing resistance.

## What paint to use on the exterior

Before starting the work, be sure to make a good plan because it is not a job that you want to do every year. To coat a new or to refurbishment facades, it is essential to prevent water from entering through cracks that might occur in fissured areas, not always visible (microcracks). The coating system should have properties of elasticity and impermeability over the years and be resistant to the most adverse environmental conditions.

### Some tips to the different kind of finishes

- **Facades with good condition and no major anomalies:** Acrylic paint will have a performance over 10 years.
- **Facades exposed to adverse weather conditions:** pure acrylic paint will have a performance over 15 year - high durability.
- **Cracked walls:** High elasticity and flexible membrane paint will have a performance over 10 years (fissure bridge up to 0.3mm).

**Know how much you have to order-** After choosing the kind, finish and colour of your paint, now you will finally order. Do not forget how many coats you will apply and also consider doors and windows areas. Always leave a margin and order considering possible leftovers.

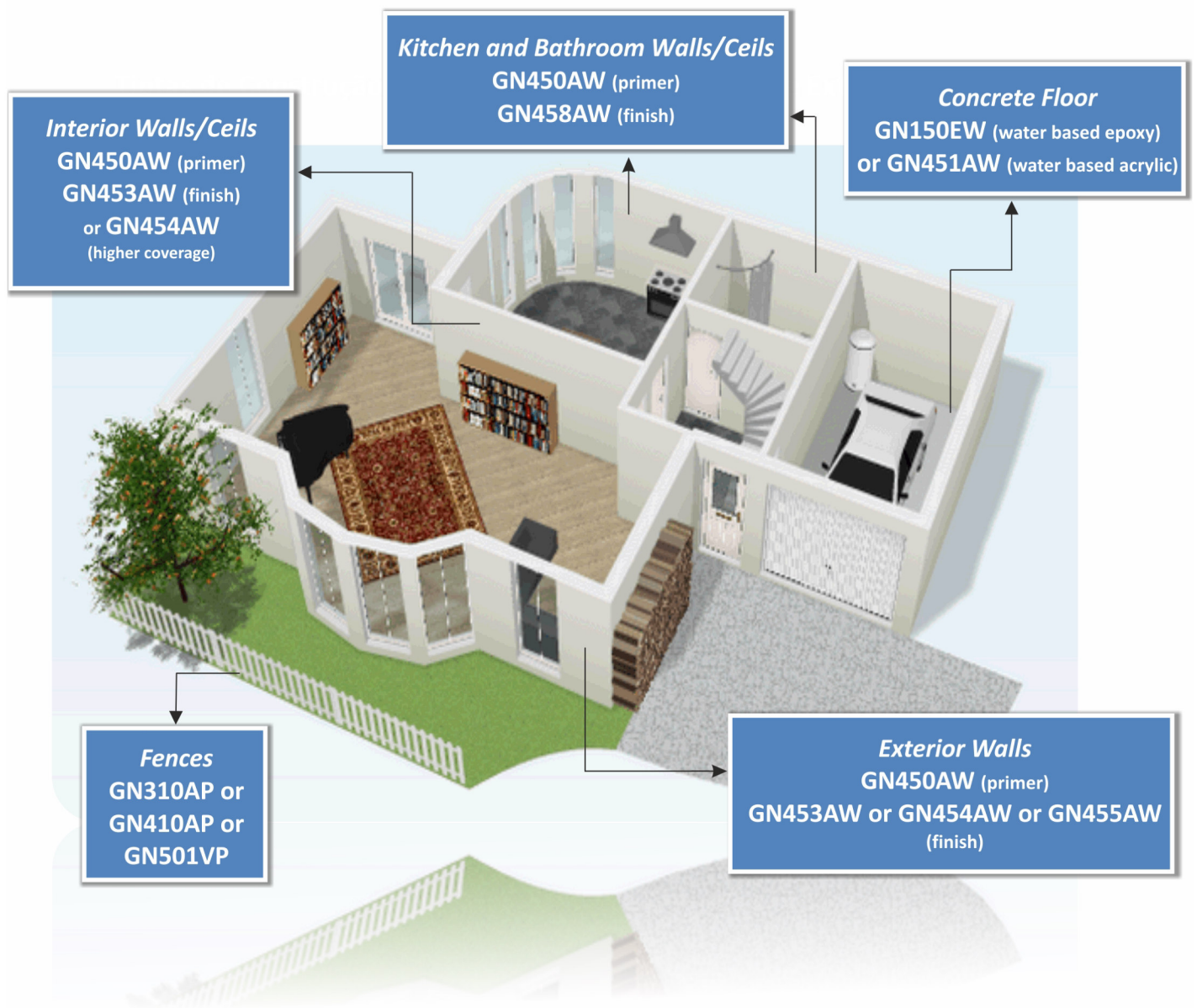
To calculate the quantity of paint you will need, consider the area to be painted and the theoretical coverage of the paint that you will find usually on the product technical data sheet

$$\frac{\text{Surface Area}}{\text{Theoretical Coverage}}$$

**Select the painting tool** -Depending on the area to paint, you will need a specif tool. Ceilings and walls can be paint with roller, brush or spray. Trim and details ask for a brush, because they give more control. To paint flat surfaces the recommended tool is a roller.



# COATING SYSTEMS



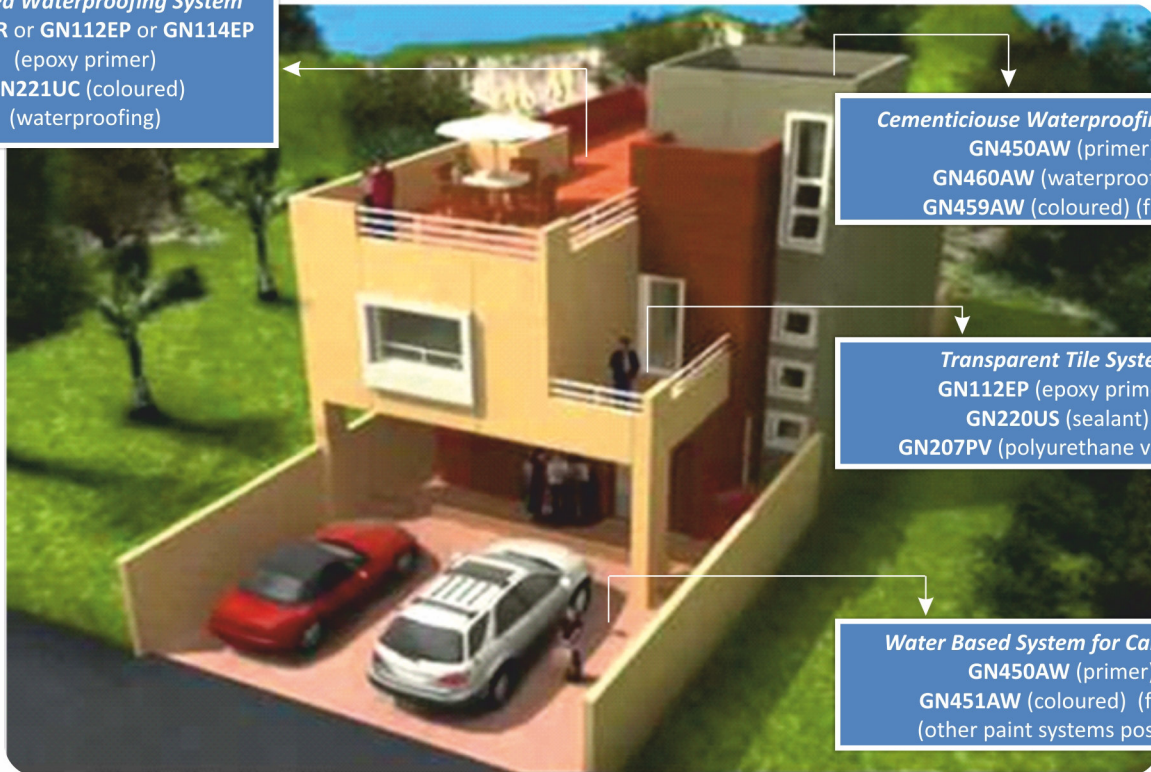
# WATERPROOFING

**Polyurea Waterproofing System**  
GN120ER or GN112EP or GN114EP  
(epoxy primer)  
GN221UC (coloured)  
(waterproofing)

**Cementitious Waterproofing System**  
GN450AW (primer)  
GN460AW (waterproofing)  
GN459AW (coloured) (finish)

**Transparent Tile System**  
GN112EP (epoxy primer)  
GN220US (sealant)  
GN207PV (polyurethane varnish)

**Water Based System for Car Parking**  
GN450AW (primer)  
GN451AW (coloured) (finish)  
(other paint systems possible)



## Globalfloor Waterproofing System



### 1. Aqueous System

- a) GlobalCryl GN450AW
- b) GlobalCryl GN460WP
- c) GlobalCryl GN459AW



### 2. 2K Cold Polyurea System

- a1) GlobalDur GN112 Epoxy Primer (Glazed)
- a2) GlobalDur GN114 Epoxy Primer (Wet)
- a3) GlobalDur GN120 Epoxy Resin (Dry)
- b) GlobalThane GN221 Urethane Coating
- c) GlobalThane GN2## (polyurethane finish)\*

\*Optional. Provides greater chemical and abrasion resistance.



**Globalnavy - Tintas e Revestimentos, Lda.**

Parque Industrial de Carrascas

Estrada Nacional 252

2950-402 Palmela – PORTUGAL

Telephone: +351 265 107 979 sales@globalnavy.net

www.globalnavy.net facebook.com/Globalnavy instagram.com/globalnavy/



Scan me

Co-financed by:



www.globalnavy.net